

Sample: 1902DBL0299.1960

METRC Sample:  
Lot #: 19B1042502

Strain: Muscle Cream 1000mg 19B1042502  
Ordered: 02/27/2019; Sampled: 03/05/2019; Completed: 03/13/2019

## Muscle Cream 1000mg 19B1042502

Topical, Salve, Other



Pesticides



Microbials



Mycotoxins



Heavy Metals



Foreign Matter



Solvents

### Terpenes

Analyzed by 300.13 GC/FID and GC/MS

0.790%  
Total Terpenes



Compound	LOQ %	Mass %	Mass mg/g	Relative Concentration
Linalool	0.013	0.305	3.05	
α-Pinene	0.013	0.164	1.64	
Eucalyptol	0.013	0.151	1.51	
Camphene	0.013	0.078	0.78	
β-Pinene	0.013	0.040	0.40	
δ-Limonene	0.013	0.036	0.36	
p-Cymene	0.013	0.016	0.16	
α-Bisabolol	0.013	<LOQ	<LOQ	
α-Humulene	0.013	<LOQ	<LOQ	
α-Terpinene	0.013	<LOQ	<LOQ	
β-Caryophyllene	0.013	<LOQ	<LOQ	
β-Myrcene	0.013	<LOQ	<LOQ	
Caryophyllene Oxide	0.013	<LOQ	<LOQ	
cis-Nerolidol	0.008	<LOQ	<LOQ	
cis-Ocimene	0.008	<LOQ	<LOQ	
δ-3-Carene	0.013	<LOQ	<LOQ	
γ-Terpinene	0.013	<LOQ	<LOQ	
Guaiol	0.013	<LOQ	<LOQ	
Isopulegol	0.013	<LOQ	<LOQ	
Terpinolene	0.013	<LOQ	<LOQ	
trans-Nerolidol	0.005	<LOQ	<LOQ	
trans-Ocimene	0.005	<LOQ	<LOQ	

### Cannabinoid Relative Concentration

Analyzed by 300.18 UHPLC/PDA

0.116%  
Δ9-THC + Δ8-THC

2.055%  
CBD

Not Tested

pH: NT  
Aw: NT

2.193%  
Total Cannabinoids

Not Tested  
Homogeneity

Compound	LOQ %	Mass %	Mass mg/g	Relative Concentration
CBC	0.005	<LOQ	<LOQ	
CBCa	0.005	<LOQ	<LOQ	
CBD	0.005	2.055	20.55	
CBDa	0.005	<LOQ	<LOQ	
CBDV	0.005	<LOQ	<LOQ	
CBDVa	0.005	<LOQ	<LOQ	
CBG	0.005	0.021	0.21	
CBGa	0.005	<LOQ	<LOQ	
CBL	0.005	<LOQ	<LOQ	
CBN	0.005	<LOQ	<LOQ	
Δ8-THC	0.005	<LOQ	<LOQ	
Δ9-THC	0.005	0.116	1.16	
THCa	0.005	<LOQ	<LOQ	
THCV	0.005	<LOQ	<LOQ	
THCVa	0.005	<LOQ	<LOQ	

1 Unit = Muscle Cream, 45g

Total THC = 0.877 x THC-A + Δ9-THC + Δ8-THC; Total CBD = CBDa \* 0.877 + CBD



*Stacy Gardalen*

Stacy Gardalen  
Quality Control

*Glen Marquez*

Glen Marquez  
Quality Control



4439 Polaris Ave  
Las Vegas, NV  
(702) 728-5180

www.dblabslv.com



# Certificate of Analysis

Powered by Confident Cannabis

Sample: 1902DBL0299.1960

METRC Sample:  
Lot #: 19B1042502

Strain: Muscle Cream 1000mg 19B1042502  
Ordered: 02/27/2019; Sampled: 03/05/2019; Completed: 03/13/2019

## Muscle Cream 1000mg 19B1042502

Topical, Salve, Other

Pesticides		Not Tested		
Analyzed by 300.9 LC/MS/MS and GC/MS/MS				
Compound	LOQ	Limit	Mass	Status

Microbials		Not Tested		
Analyzed by 300.1 Plating/QPCR				
Quantitative Analysis	LOQ	Limit	Mass	Status
Qualitative Analysis	Detected or Not Detected			Status

Mycotoxins		Not Tested		
Analyzed by 300.2 Elisa				
Mycotoxin	LOQ	Limit	Mass	Status

Heavy Metals		Pass		
Analyzed by 300.8 ICP/MS				
Element	LOQ	Limit	Mass	Status
	PPB	PPB	PPB	
Arsenic	54	2000	<LOQ	Pass
Cadmium	54	820	<LOQ	Pass
Lead	54	1200	<LOQ	Pass
Mercury	54	400	<LOQ	Pass

Residual Solvents		Pass		
Analyzed by 300.13 GC/FID and GC/MS				
Compound	LOQ	Limit	Mass	Status
	PPM	PPM	PPM	
Butanes	83	500	<LOQ	Pass
Heptanes	83	500	<LOQ	Pass
Propane	83	500	<LOQ	Pass



*Stacy Gardalen*

Stacy Gardalen  
Quality Control

*Glen Marquez*

Glen Marquez  
Quality Control



4439 Polaris Ave  
Las Vegas, NV

(702) 728-5180

www.dblabslv.com

The reported result is based on a sample weight with the applicable moisture content for that sample. LOQ = Limit of Quantitation. Pesticide LOQ = Instrument Limit of Quantitation, NA = Not Analyzed, ND = Not Detected, NR = Not Reported, NT = Not Tested, PGR = Plant Growth Regulator. Unless otherwise stated all quality control samples performed within specifications established by the Laboratory. This product has been tested by DB Labs, LLC (MME# 61887736101164525768) using valid testing methodologies and a quality system as required by Nevada state law. Edibles are picked up prior to final packaging unless otherwise stated. Values reported relate only to the product tested. The uncertainty of measurement associated with the measurement result reported in this certificate is available from the organization upon request. DB Labs makes no claims as to the efficacy, safety or other risks associated with any detected or non-detected levels of any compounds reported herein. This Certificate shall not be reproduced except in full, without the written approval of DB Labs.



# Certificate of Analysis

Powered by Confident Cannabis



Sample: 1902DBL0299.1960

METRC Sample:  
Lot #: 19B1042502

Strain: Muscle Cream 1000mg 19B1042502  
Ordered: 02/27/2019; Sampled: 03/05/2019; Completed: 03/13/2019

## Muscle Cream 1000mg 19B1042502

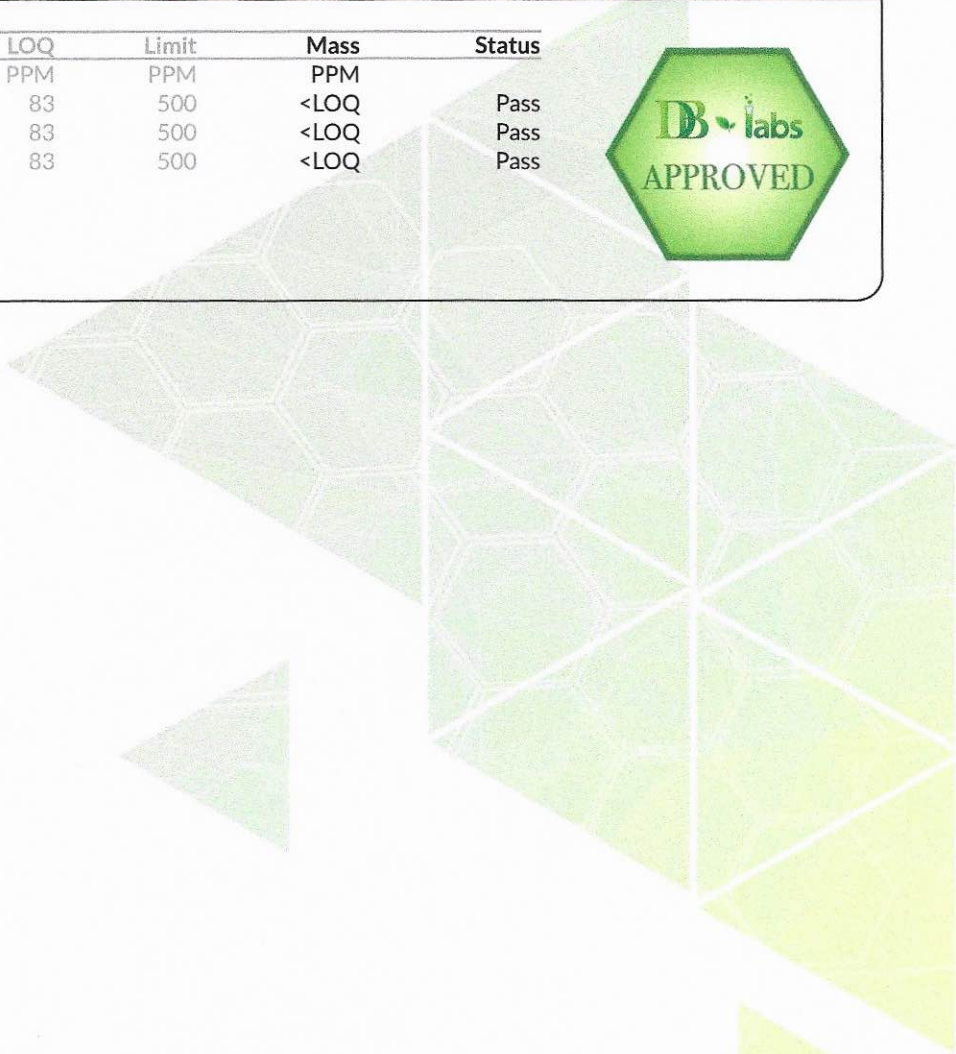
Topical, Salve, Other

### Residual Solvents

Analyzed by 300.13 GC/FID and GC/MS

Pass

Compound	LOQ PPM	Limit PPM	Mass PPM	Status
Butanes	83	500	<LOQ	Pass
Heptanes	83	500	<LOQ	Pass
Propane	83	500	<LOQ	Pass



Stacy Gardalen  
Quality Control

Glen Marquez  
Quality Control



4439 Polaris Ave  
Las Vegas, NV

(702) 728-5180

www.dblabslv.com

The reported result is based on a sample weight with the applicable moisture content for that sample. LOQ = Limit of Quantitation, Pesticide LOQ = Instrument Limit of Quantitation, NA = Not Analyzed, ND = Not Detected, NR = Not Reported, NT = Not Tested, PGR = Plant Growth Regulator. Unless otherwise stated all quality control samples performed within specifications established by the Laboratory. This product has been tested by DB Labs, LLC (MME# 61887736101164525768) using valid testing methodologies and a quality system as required by Nevada state law. Edibles are picked up prior to final packaging unless otherwise stated. Values reported relate only to the product tested. The uncertainty of measurement associated with the measurement result reported in this certificate is available from the organization upon request. DB Labs makes no claims as to the efficacy, safety or other risks associated with any detected or non-detected levels of any compounds reported herein. This Certificate shall not be reproduced except in full, without the written approval of DB Labs.



# Certificate of Analysis

Powered by Confident Cannabis



Sample: 1902DBL0299.1960


METRC Sample:  
Lot #: 19B1042502

Strain: Muscle Cream 1000mg 19B1042502  
Ordered: 02/27/2019; Sampled: 03/05/2019; Completed: 03/13/2019

## Muscle Cream 1000mg 19B1042502

Topical, Salve, Other



Heavy Metals					Pass
Analyzed by 300.8 ICP/MS					
Element	LOQ	Limit	Mass	Status	
	PPB	PPB	PPB		
Arsenic	54	2000	<LOQ	Pass	
Cadmium	54	820	<LOQ	Pass	
Lead	54	1200	<LOQ	Pass	
Mercury	54	400	<LOQ	Pass	



*Stacy Gardalen*

Stacy Gardalen  
Quality Control

*GP*

Glen Marquez  
Quality Control



4439 Polaris Ave  
Las Vegas, NV

(702) 728-5180

www.dblabslv.com

The reported result is based on a sample weight with the applicable moisture content for that sample. LOQ = Limit of Quantitation. Pesticide LOQ = Instrument Limit of Quantitation. NA = Not Analyzed. ND = Not Detected. NR = Not Reported. NT = Not Tested. PGR = Plant Growth Regulator. Unless otherwise stated all quality control samples performed within specifications established by the Laboratory. This product has been tested by DB Labs, LLC (MME# 61887736101164525768) using valid testing methodologies and a quality system as required by Nevada state law. Edibles are picked up prior to final packaging unless otherwise stated. Values reported relate only to the product tested. The uncertainty of measurement associated with the measurement result reported in this certificate is available from the organization upon request. DB Labs makes no claims as to the efficacy, safety or other risks associated with any detected or non-detected levels of any compounds reported herein. This Certificate shall not be reproduced except in full, without the written approval of DB Labs.